

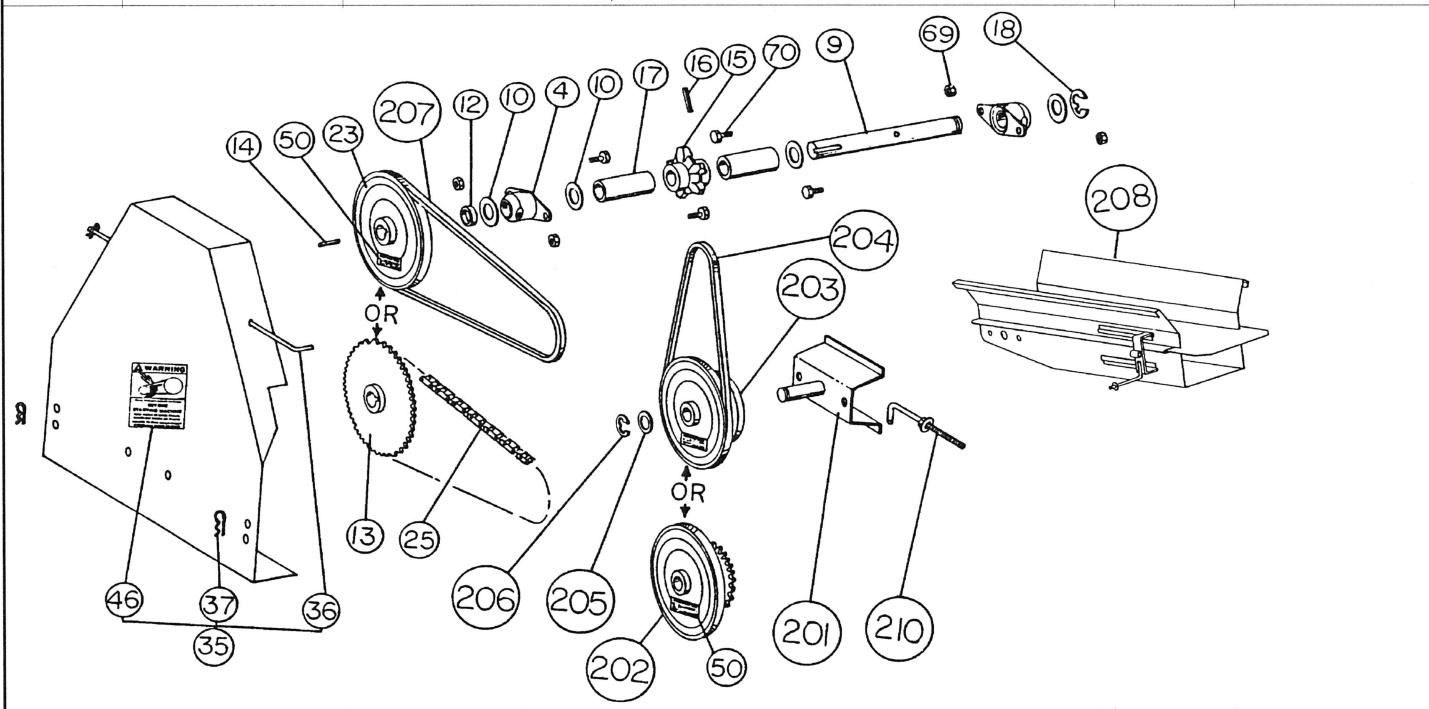
Old style 7" Wide Single-Chain Elevator Parts List

Model with trough-chain tightener located on boot end of elevator.

Old style Drive End (chain tightener on boot end)

With detachable chain

Ref. No.	Part No.	Description	No. Req'd
4	E779	BEARING W/ZERK,BRONZE,3/4" ID	2
9	E744	SHAFT,DRIVE,3/4" X 12-3/4"L	1
10	F806030	BUSH,MACH,18X24/32X1-1/4",UPLT	3
12	E7105	PIPE,PVC,S/40 X .75" X 3/8"	1
13	E769	SPROCKET,DRIVE SHAFT,4060X3/4"	1
14	F203020	KEY,SQUARE,3/16X3/16X1",UP	1
15	E743	SPROCKET,#55 X 6-TOOTH X3/4"ID	1
16	F407040	PIN,ROLL,1/4X1-3/8",PLT	1
17	E708	PIPE,PVC,S/40 X .75" X 2.25"	2
18	F503020	RING,E-RET,.05X.625X1.12,UPLT	1
23	E786	PULLEY W/DECAL,X-SHAFT,10X3/4"	1
25	E771	CHAIN W/CL ENDLESS,ROL,40X106P	1
35	E761	SHIELD,7TO13" ELEV DRIVE(1-PC)	1
36	E705	X-ROD W/HAIR PINS(1-PC DR SHD)	1
37	F405050	PIN,HAIR,#17X0.08"X1.625",PLT	3
46	11096	DECAL,WARNING-BEFORE STARTING	1
50	11100	DECAL,IMPORTANT	1
69	F354040	NUT,HEX,5/16-18,G5,PLT	6
70	F1072320	HHCS,5/16-18X5/8",G5,PLT	6
201	E752	WELDMENT,JACK SHAFT SLIDING	1
202	E770	PULLEY W/SPROKT,10" & 4018X3/4	1
203	E754	PULLEY,DOUBLE,5"& 10" X .75"ID	1
204	4L51	XXV-BELT,4L51 (discontinued)	-
205	F806030	BUSH,MACH,18X24/32X1-1/4",UPLT	1
206	F503020	RING,E-RET,.05X.625X1.12,UPLT	1
207	AX54	V-BELT,AX54,NOTCHED	1
208		DISCONTINUED	-
210	E755	J-BOLT W/FASTENERS,5/16 X5-3/4	1



Old style 7" Wide Single-Chain Elevator Parts List

Model with trough-chain tightener located on boot end of elevator.

Old style Idler End (chain tightener on boot end)

With detachable chain

Ref. No.	Part No.	Description	No. Req'd
4	E779	BEARING W/ZERK, BRONZE, 3/4" ID	2
6	E747	SLIDE, 7" ELEV BEARING MOUNT	2
10	F806030	BUSH, MACH, 18X24/32X1-1/4", UPLT	2
15	E743	SPROCKET, #55 X 6-TOOTH X 3/4" ID	1
16	F407040	PIN, ROLL, 1/4X1-3/8", PLT	1
18	F503020	RING, E-RET, .05X.625X1.12, UPLT	2
400	E748-OS	BOOT ONLY, 7" ELEV-PRIOR	1
400A	E748-OS-K	BOOT L/AGIT KIT, 7" ELEV-PRIOR	-
401	E778-OS	XXBOOT W/HITCH, 7" ELEV-PRIOR (discontinued)	-
52	E742	SHAFT, IDLER, 3/4" X 10-7/8" L	1
404	E745-OS	I-BOLT W/FASTENERS, 5/16X5-3/4"	2
403		DISCONTINUED	-
68	F808030	WA, STD FLT, 5/16", PLT	6
69	F354040	NUT, HEX, 5/16-18, G5, PLT	6
70	F1072320	HHCS, 5/16-18X5/8", G5, PLT	6

WARNING Do not substitute Grade 2 bolts when stronger Grade 5 bolts are specified.
Failure to heed these instructions could result in serious personal injury or death!

